



HPL-S2 筒形飾縫車用拖輪安裝手冊
THE INSTRUCTION GUIDE
FOR CYLINDER BED COVERSTITCH



安裝前,請詳細閱讀安裝說明書

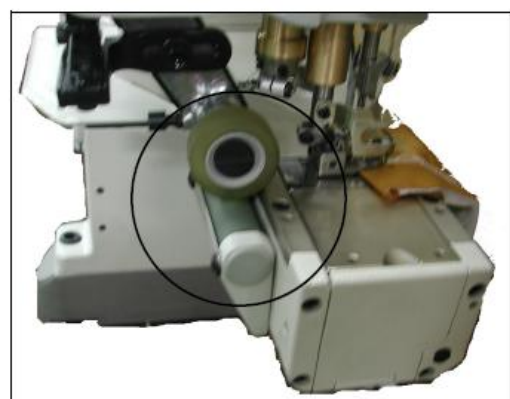
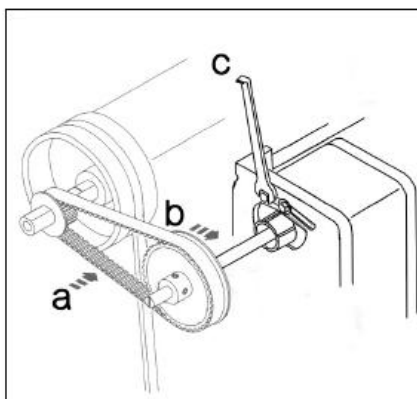
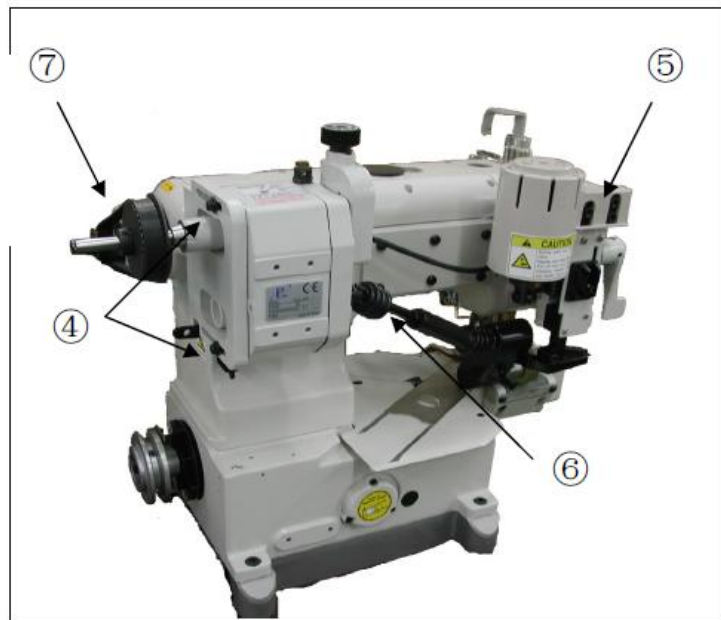
PLEASE READ INSTRUCTIONS & ASSOCIATED DRAWINGS BEFORE INSTALLATION

HPL-S2 安裝簡易說明

- ① 變速機固定架鎖上機身
Bracket of transmission fixing
- ② 拖輪固定架鎖上機身
Bracket of rear puller set fixing
- ③ 下輪座固定
Bracket of lower roller fixing

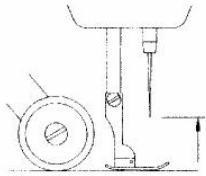


- ④ 變速機固定架側邊上下鎖住變速機
Transmission locking
- ⑤ 拖輪固定架側邊上下孔栓上拖輪組
Rear puller locking
- ⑥ 連接萬向接頭於變速機和拖輪組
Connecting all the universal joint
- ⑦ 栓上皮帶輪輪栓後，調整皮帶再安裝皮帶蓋
Studs for pulleys ;
Adjust tension of timing belt ;
Installing the belt covering

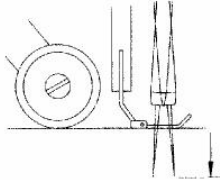


入力軸定位 Adjust input shaft position

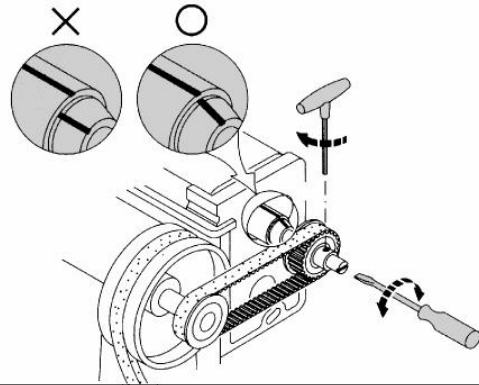
一般針車定位時，
針車提升至最高點
General type, needle
to the toppest position



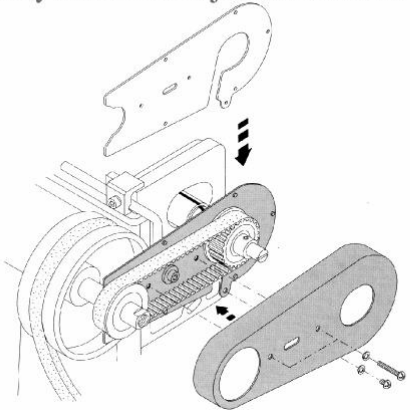
針送針車定位時，
針車下降至最低點
Needle feed type, needle
to the lowest position



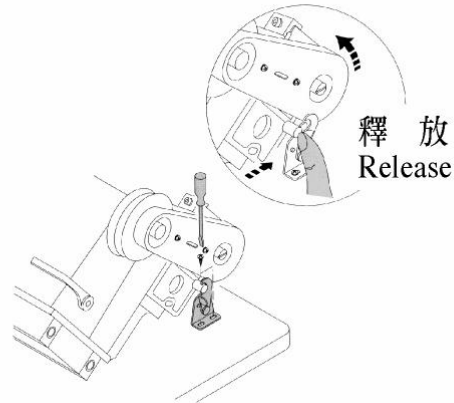
變速機的红線對齊入力轴红線後，上緊時規齒輪螺絲
Meet the both red line on transmission input shaft,
tighten the timing gear screw



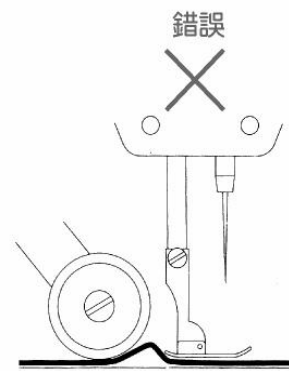
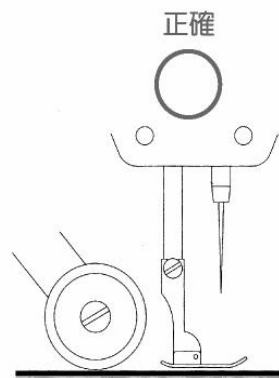
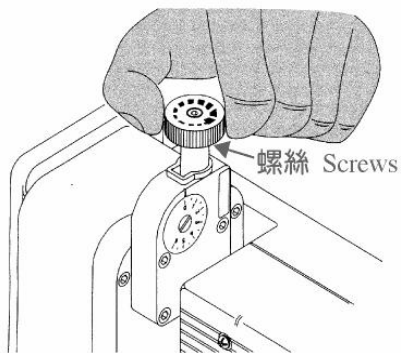
皮帶蓋安裝固定螺絲
Safety belt cover adjustment screws



安全扣
Machine rest latch for maintenance

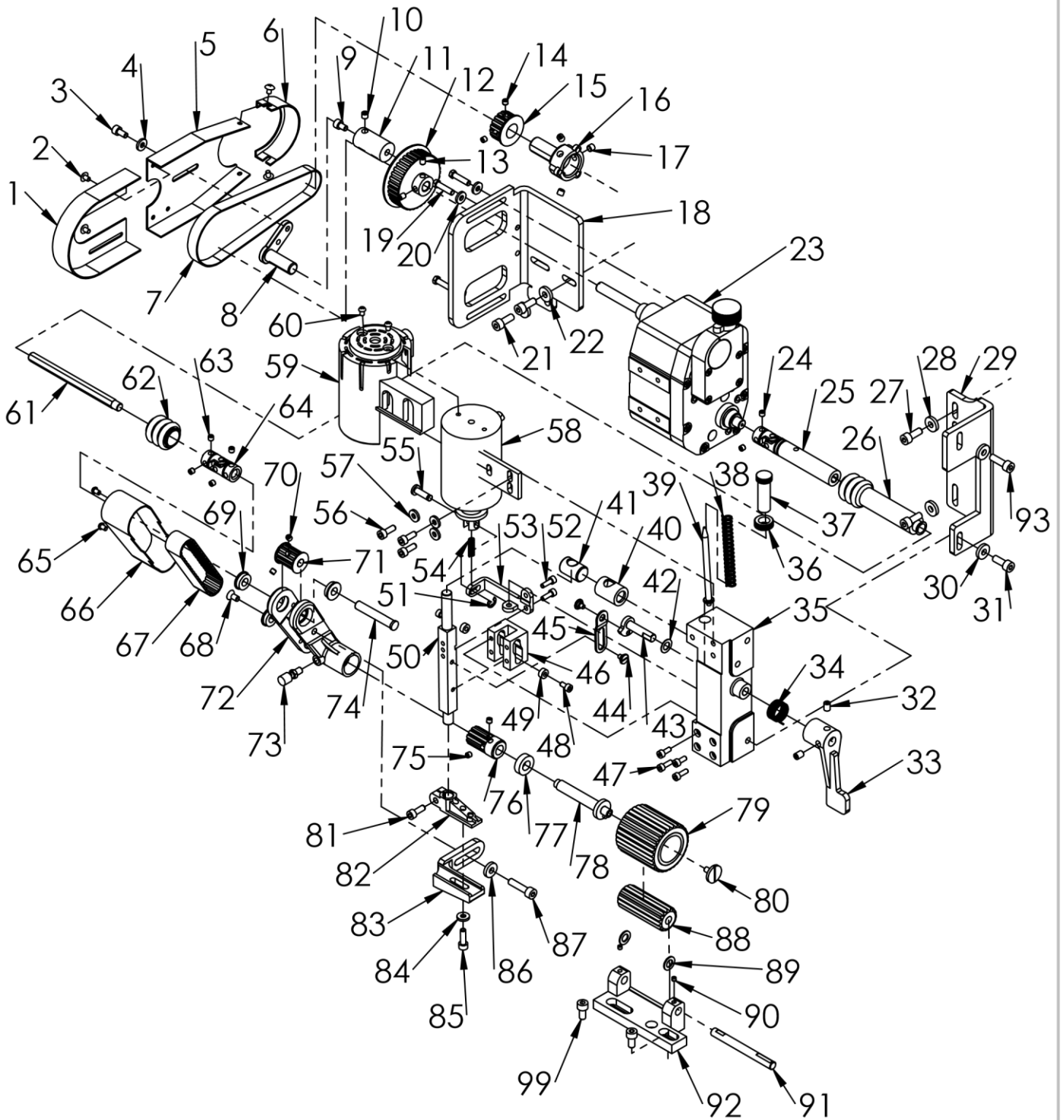


配合針車送料調整
Feeding adjustment



HPL-S2爆炸圖

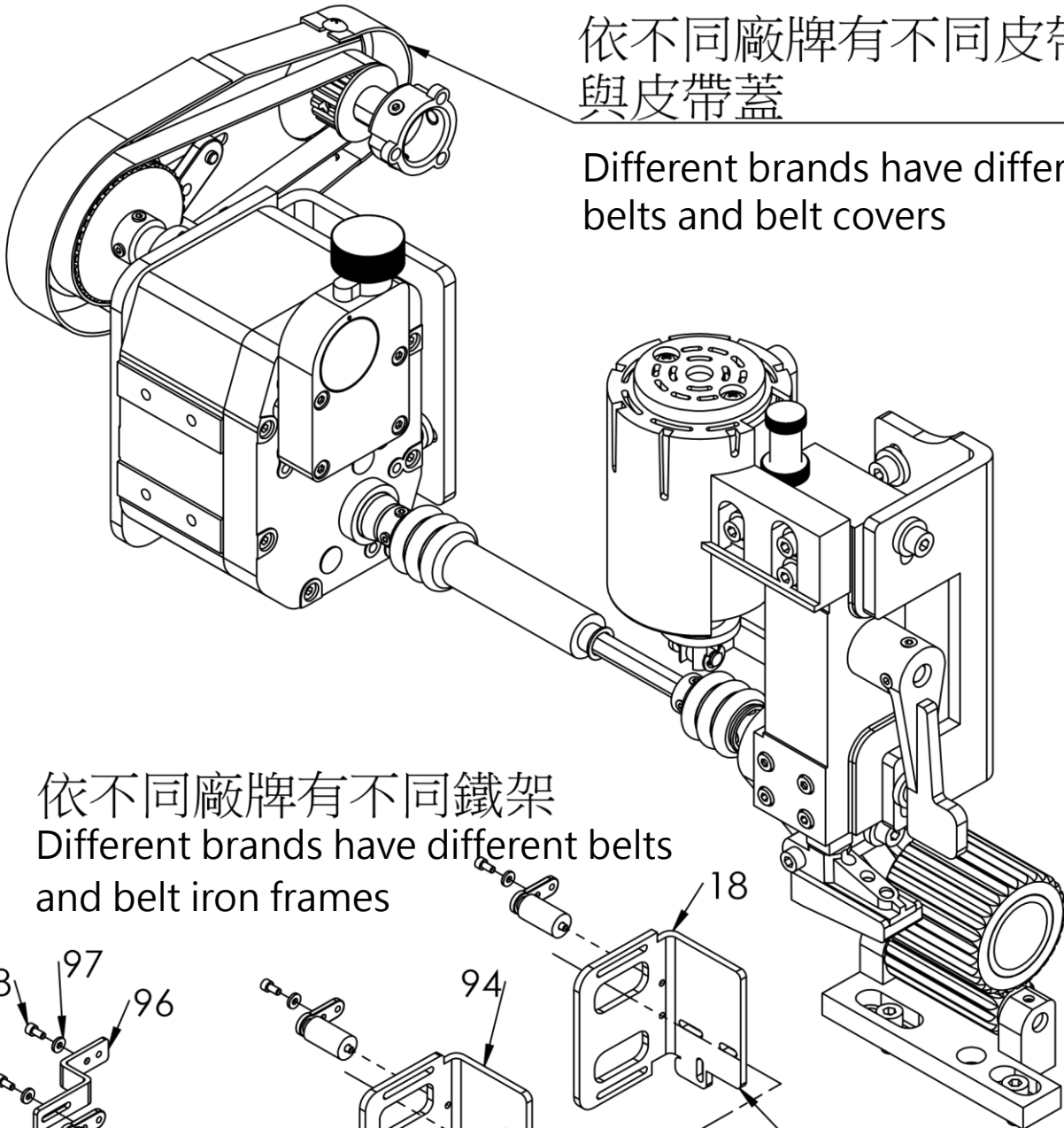
HPL-S1 Exploded view



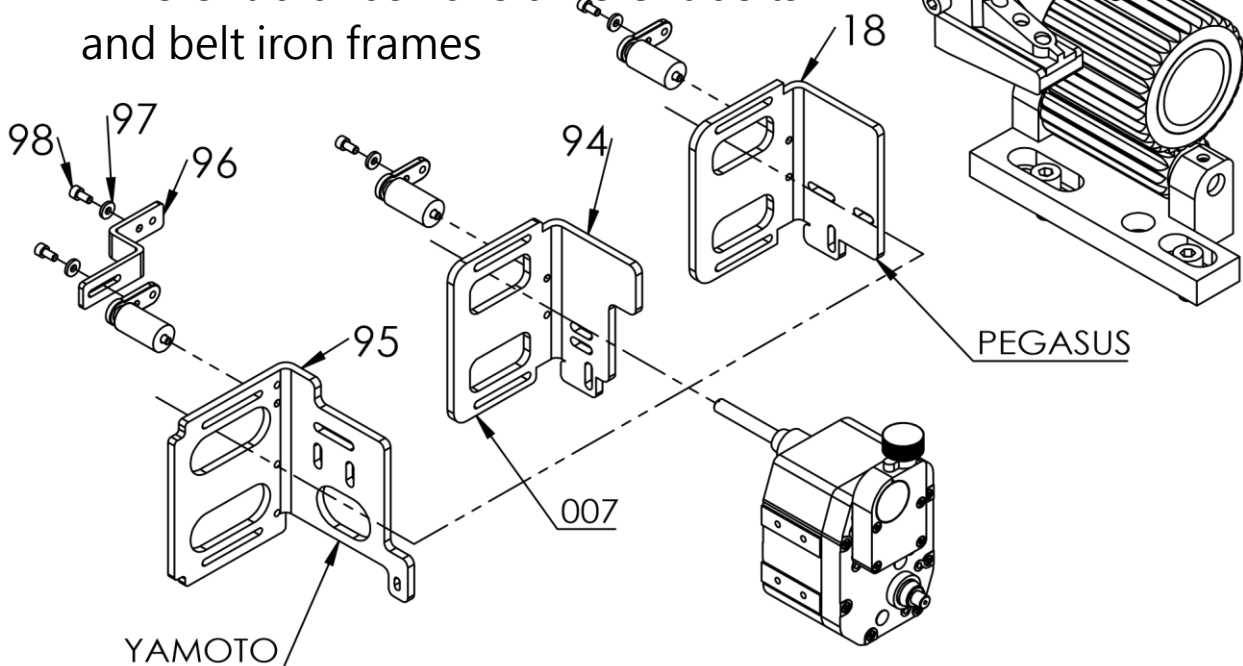
HPL-S2

依不同廠牌有不同皮帶
與皮帶蓋

Different brands have different
belts and belt covers



依不同廠牌有不同鐵架
Different brands have different belts
and belt iron frames



PEGASUS

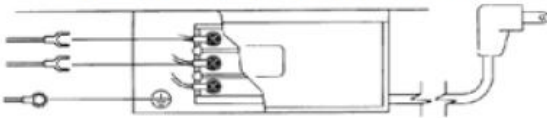
YAMOTO

接線圖 WIRING DIAGRAM

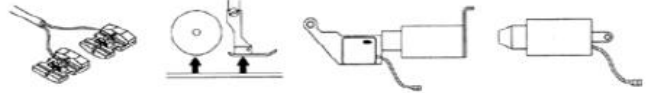


- ① 接電源 To Power supply
- ② 接壓腳自動提升電磁鐵 To solenoid power cords of auto-lifter
- ③ 接DC24~48V自動倒針電磁電源線 To DC24~48v N.P. motor power cords of auto-reverse.
- ④ 接迴針開關 To Reverse stitch switch
- ⑤ 接膝動式開關 To Knee lifter switch
- ⑥ 接腳動式懸掛開關 To Knee lifter
- ⑦ 接電磁鐵 To Solenoid

① 電源線及地線(電源：AC100V~220VC)
power cords and earth terminal
(AC100V~220VC power source)

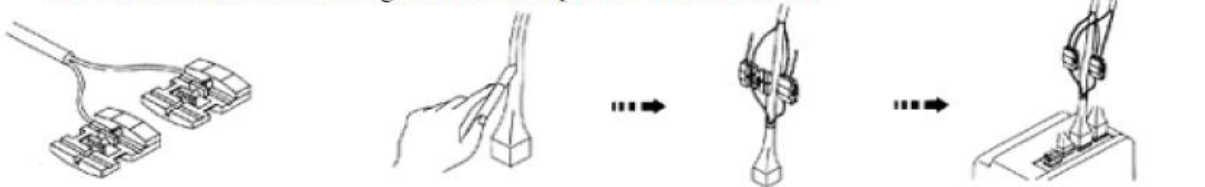


② 接壓腳自動提升電磁鐵電源線
To solenoid power cords of auto-lifter

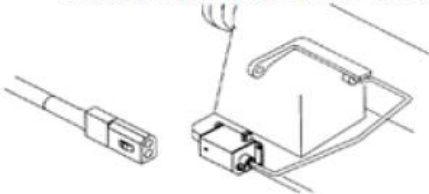


③ 接於自動切線針車倒針用電磁電源上(DC24~48V)
Finding and connecting the power cords of auto-reverse
solenoid(DC24~48V)

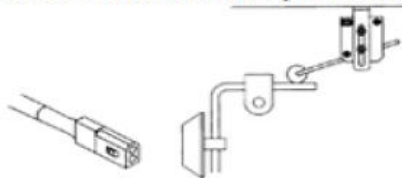
無自動切線之針車此線無需使用並將蓋子蓋上
For nonautomatic-trimming machine, keep this wire connector



④ 迴針開關
Microswitch for reverse lever



⑤ 膝動開關
Microswitch for knee presser foot lifter



⑥ 懸吊式開關
Suspension microswitch



⑦ 電磁鐵
Solenoid

