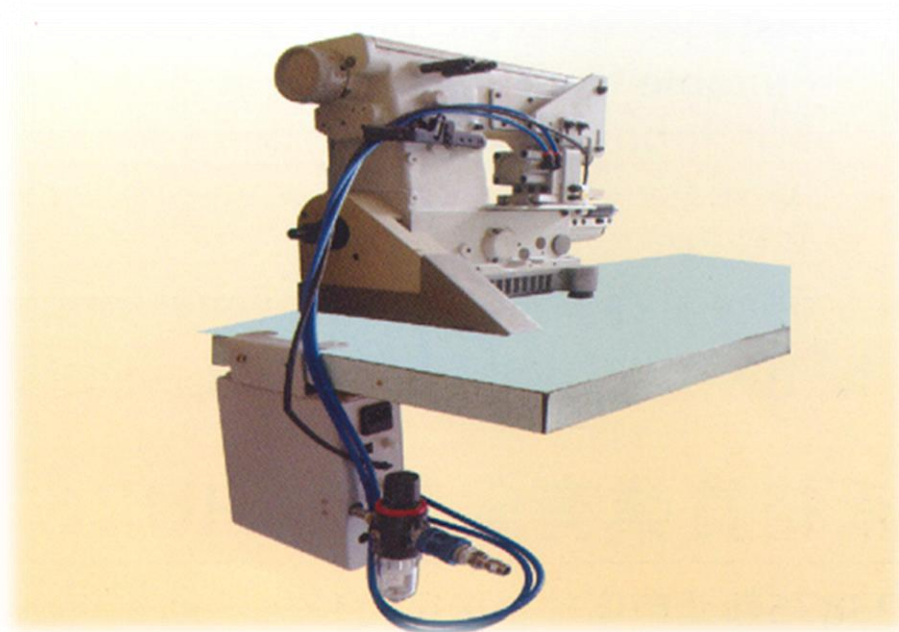




# HTCA-L50 自動切帶安裝手冊

## THE INSTRUCTION GUIDE BOOK FOR AUTO CUTTING DEVICE

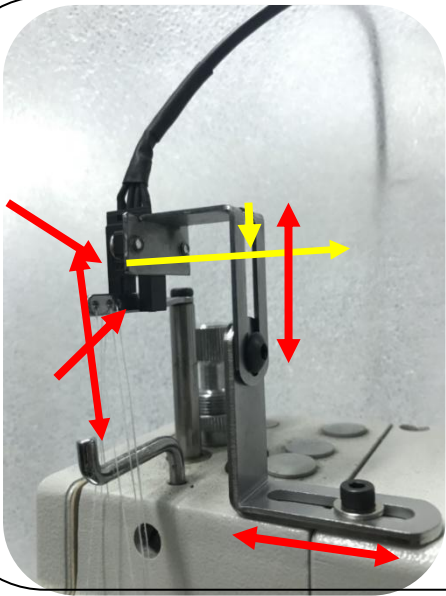


安裝前,請詳細閱讀安裝說明書

PLEASE READ INSTRUCTIONS & ASSOCIATED DRAWINGS BEFORE INSTALLATION

# HTCA-L50 快速安裝指南

## QUICK INSTALL GUIDE



1. 雙箭頭可以調整上下，前後。

Double arrow: Adjustable up and down, before and after.

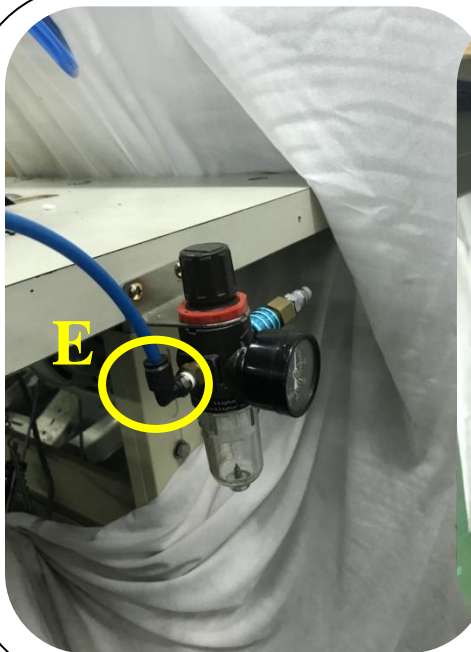
2. 針棒拉至最高處並使頂端放入光素子感測位置。The needle bar and pulled up to the highest point of the top sub-element into the optical sensing position.



2. 安裝本體並調整距離  
Install the implement and adjust the distance

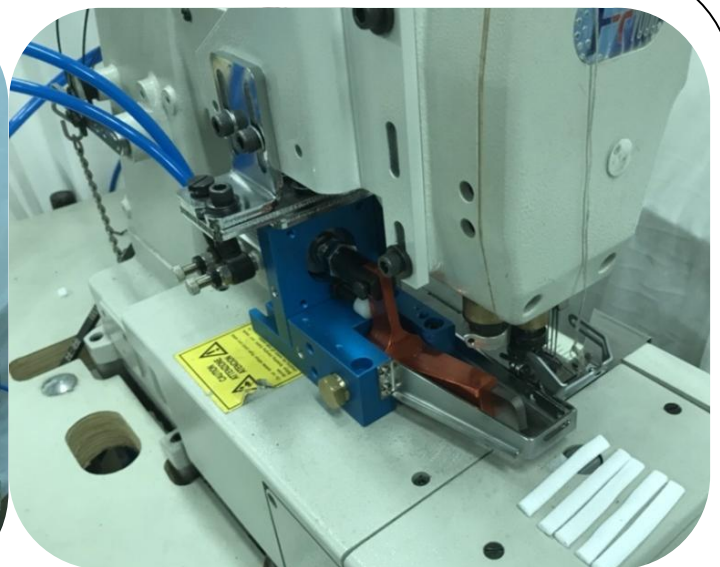
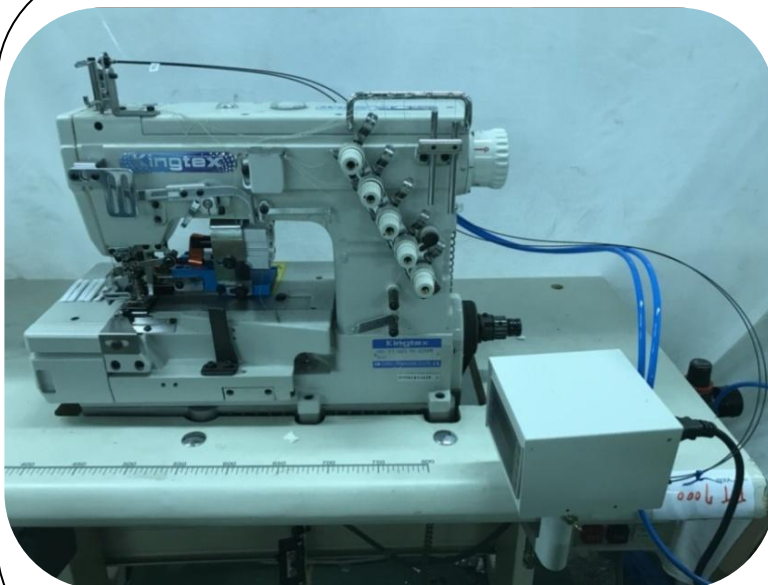
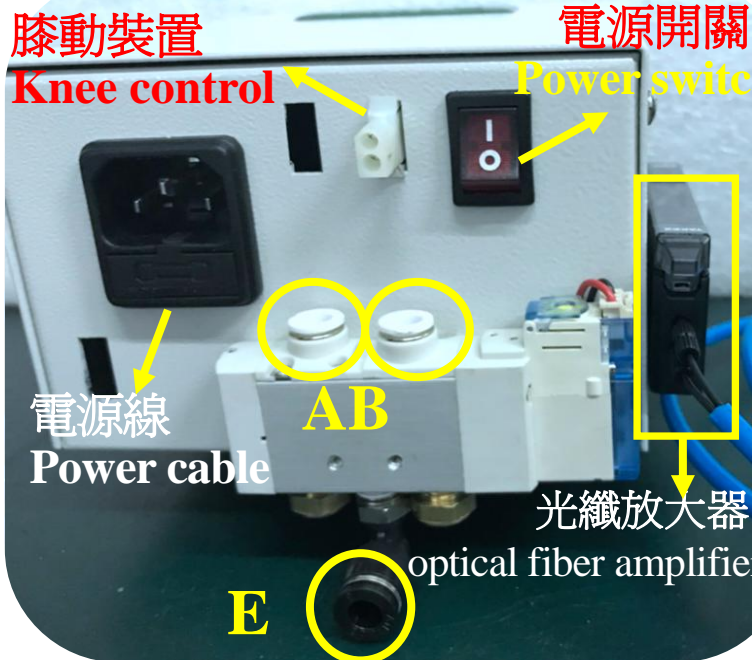


3. 安裝控制器  
Install the controller



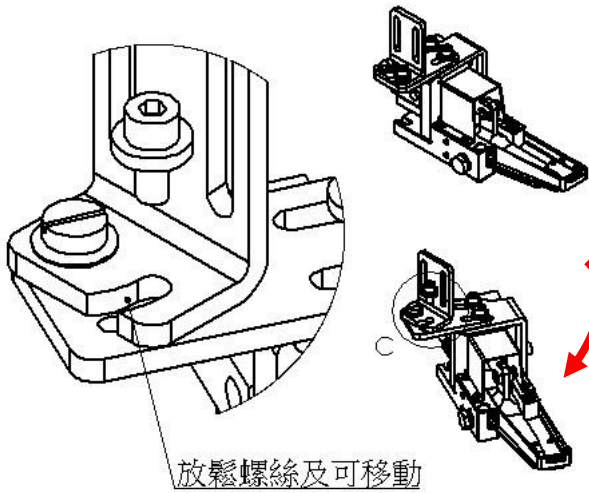
4. 安裝壓力調節器及膝控裝置

Install the pressure regulator and the knee control

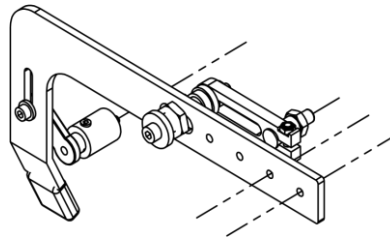
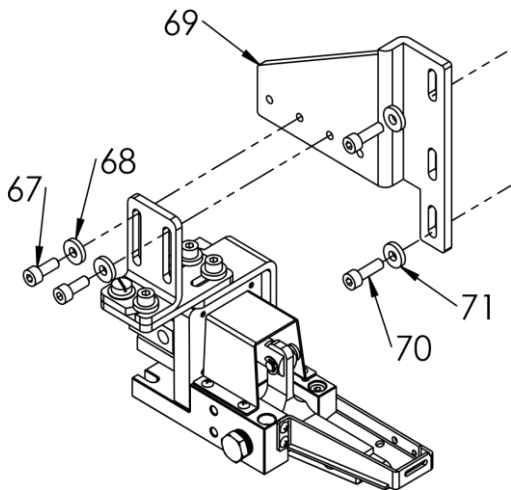


# 快速安裝指南

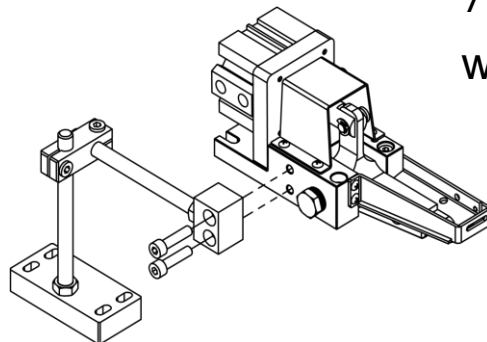
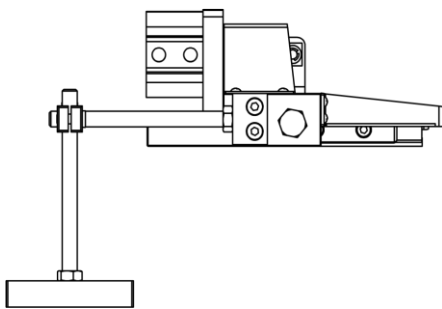
## HTCA-L50 QUICK INSTALL GUIDE



5. 不須使用時，放鬆螺絲即可移動  
Relax the screw to move when you don't use.



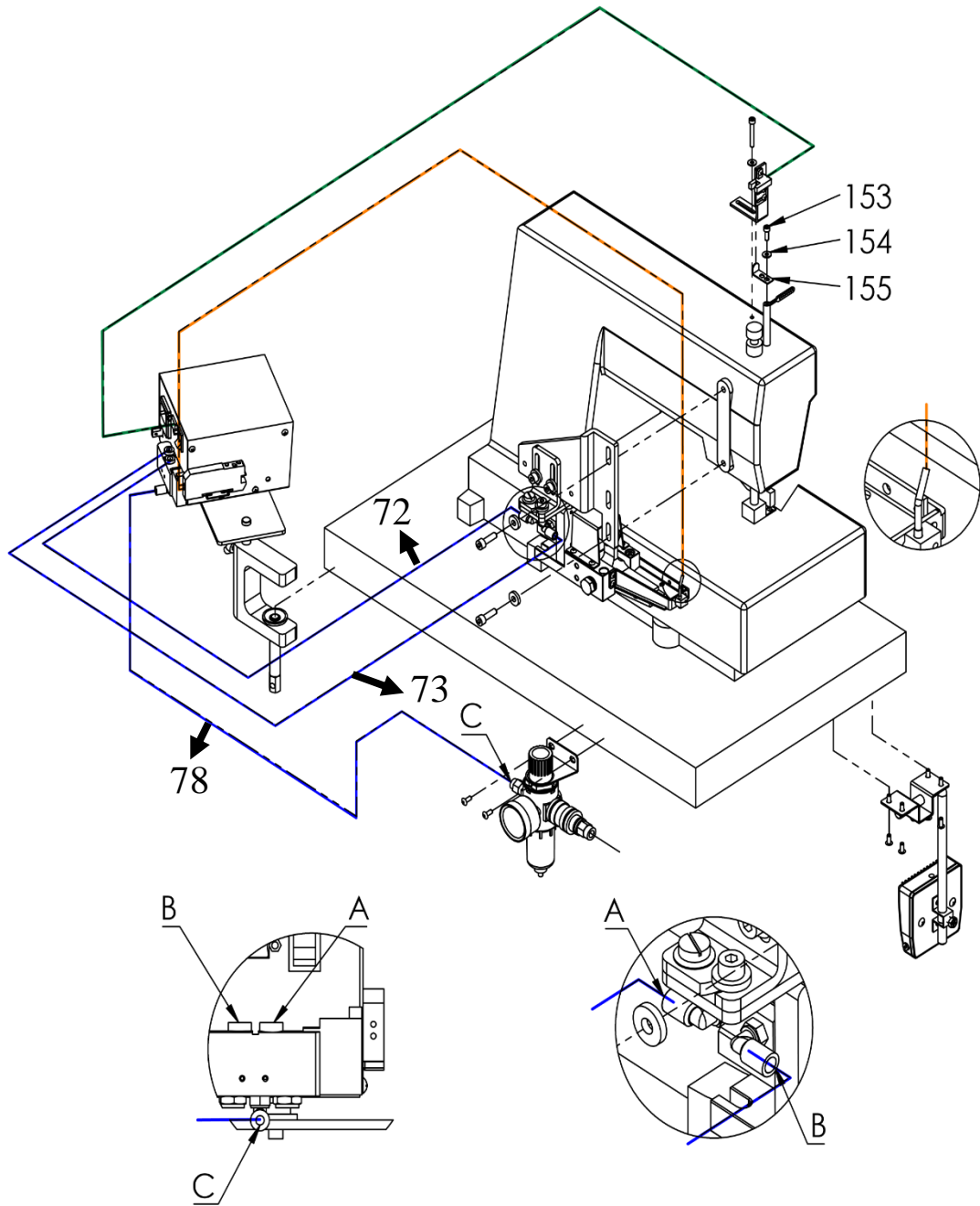
6. 不同廠牌  
附有不同鐵架  
Different brands  
have different iron  
frames.



7. 褲頭車  
waistband machine

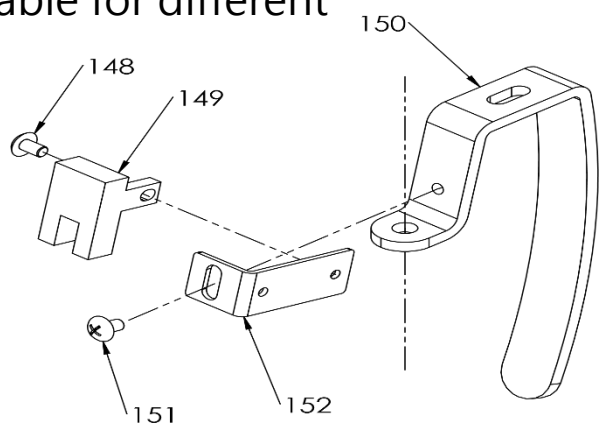
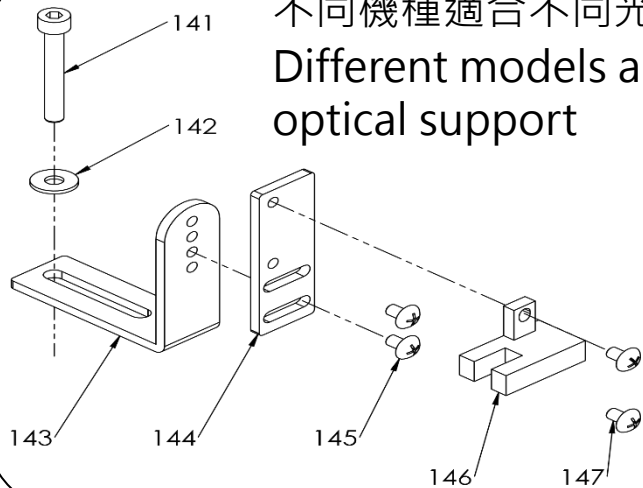
# HTCA-L50 路徑圖

## HTCA-L50 Path map



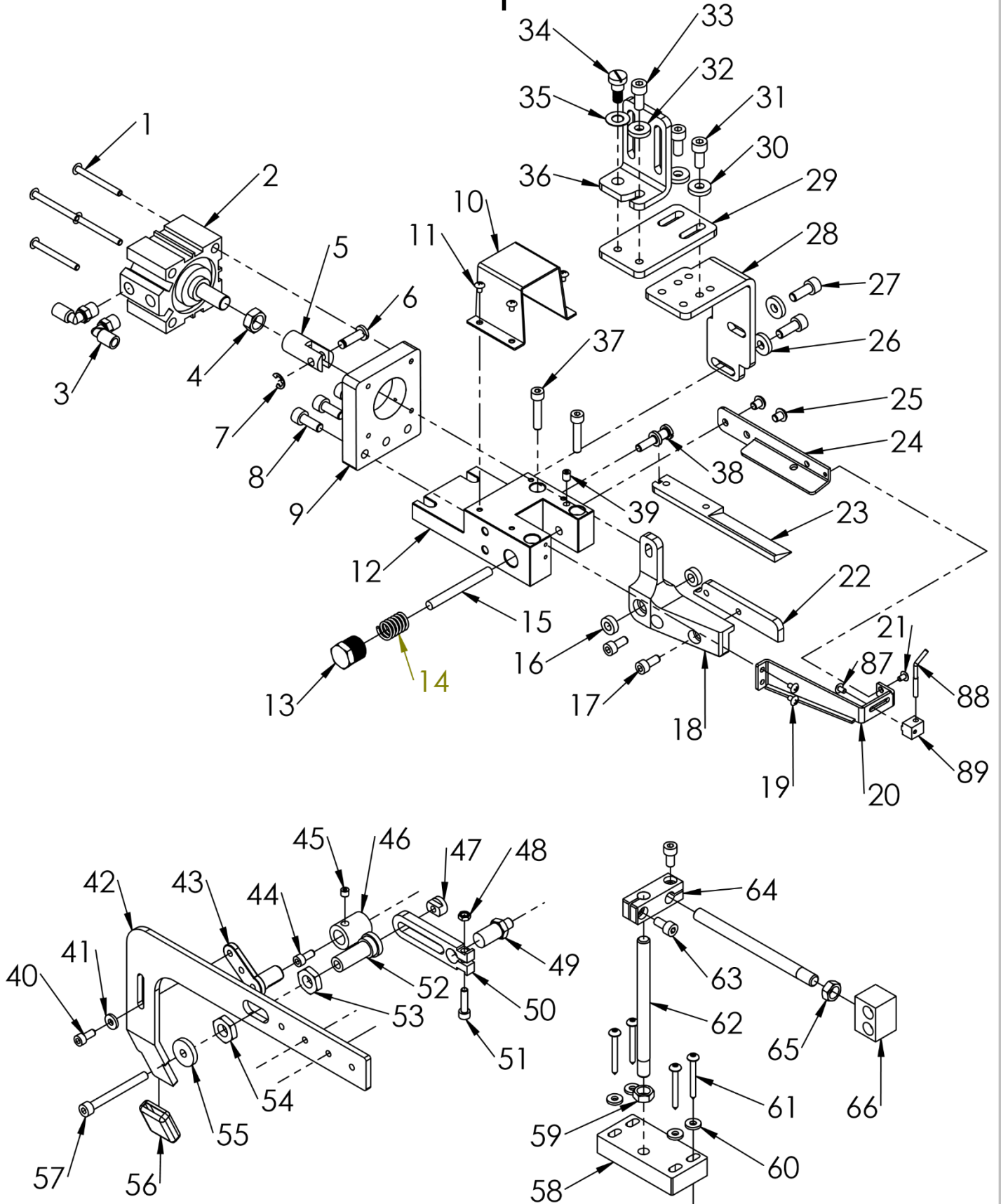
不同機種適合不同光素子支架

Different models are suitable for different optical support

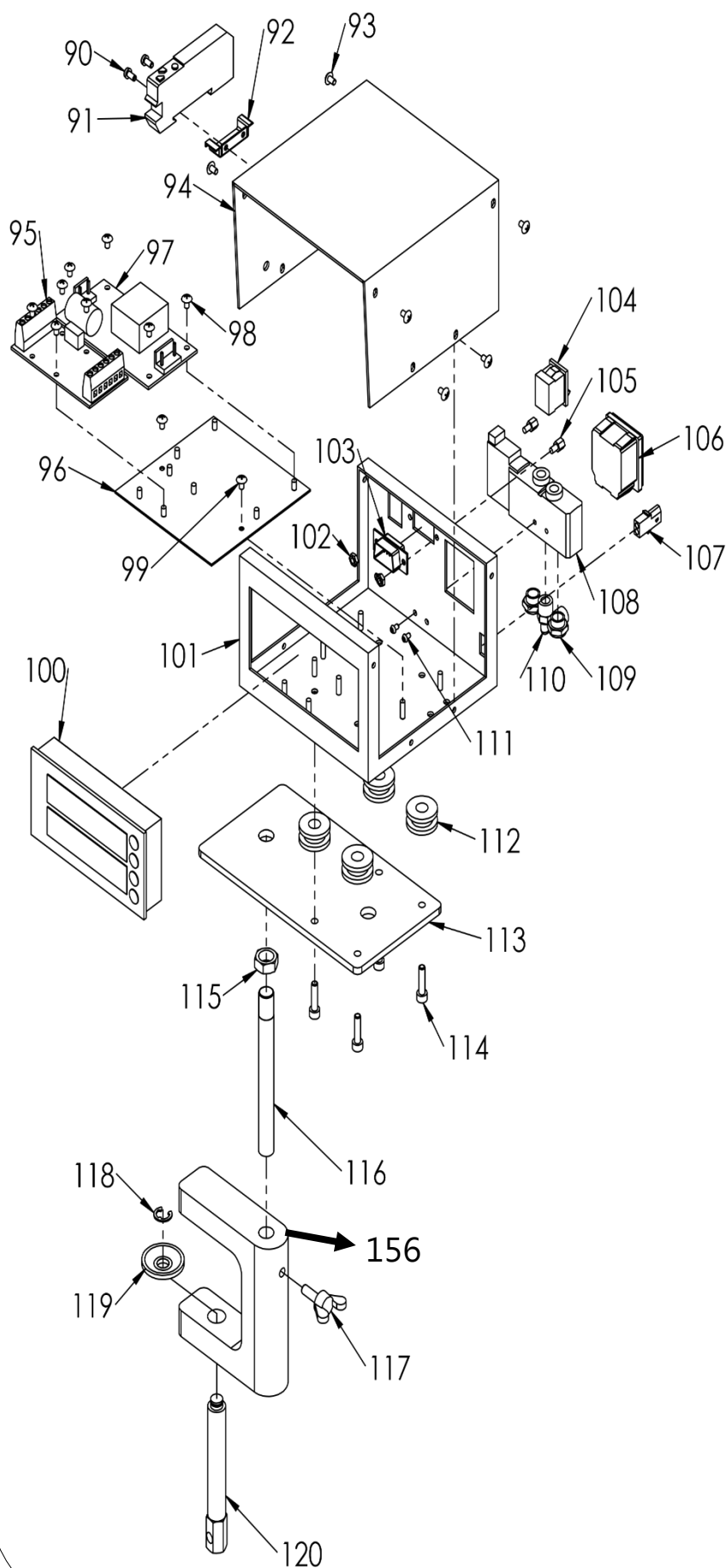


# HTCA-L50分解圖

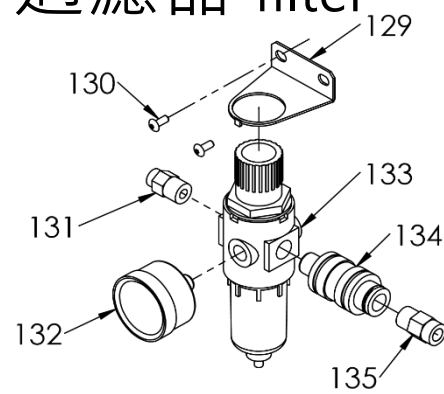
HTCA-L50 Exploded view



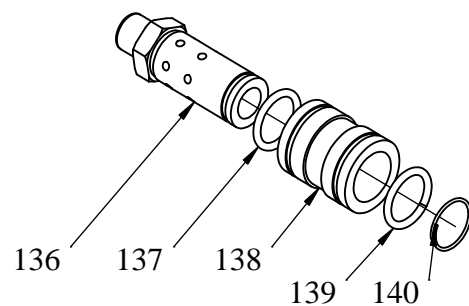
# 控制箱 control box



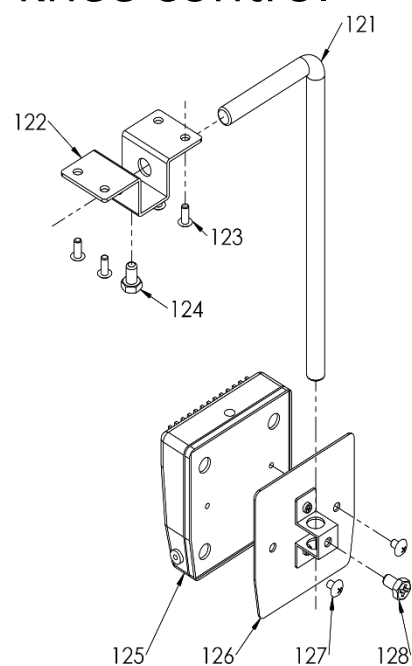
# 過濾器 filter



# 手推閥 Push valve

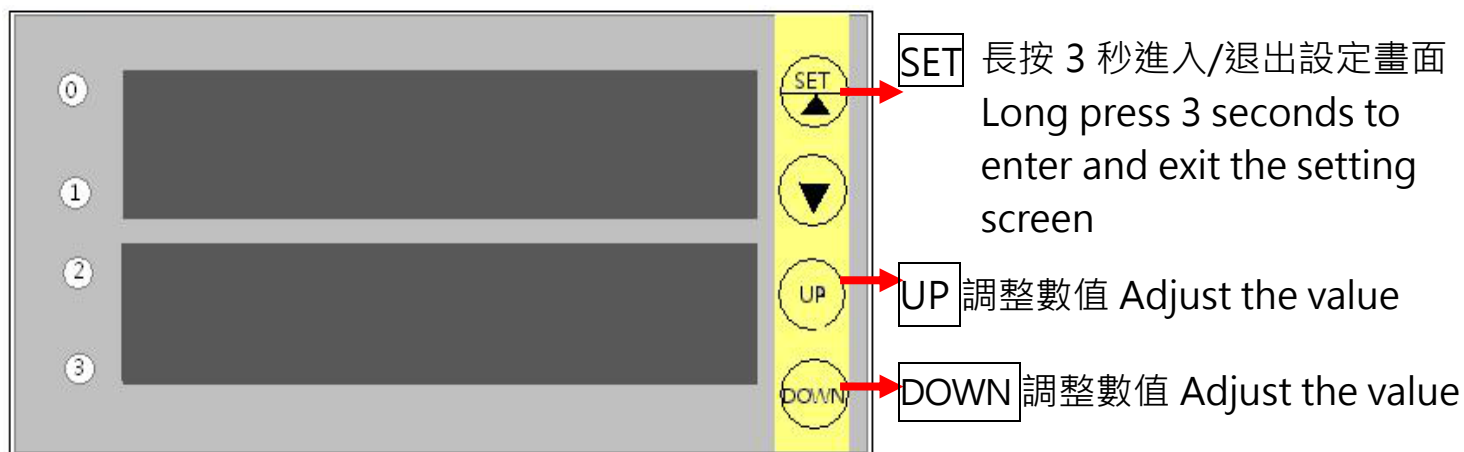


# 膝動裝置 knee control



# 控制器操作說明

## Controller Operating Instructions



※初始需要: Initial needs: ①手動定位 Manual positioning ②歸零 Zeroing

<b>顯示畫面 Display screen ← 設定畫面 Setting screen</b> (長按 3 秒進入/退出設定畫面) (Long press 3 seconds to enter and exit the setting)	
顯示針數 Stitch number display	d 200:設定針數 d 200: Set the number of stitches
顯示件數 Amount display	設定針數數值 Set the number of stitches

### 教導式 Teaching

1. 長按 **▼** 3 秒進入設定 Press and hold **▼** for 3 seconds to enter the setting.
2. 啟動旋鈕測量所需長度，完成後關閉旋鈕 Start the knob to measure the desired length and close the knob when done.
3. 按壓膝動開關剪掉布料 Press the knee switch to cut off the fabric.
4. 上排顯示器數值會自動代入 D200，如需微調再進入 D200 設定即可 Upper display value is automatically substituted into D200. If you need to fine-tune, then enter the D200 settings.
5. 長按 **▼** 3 秒退出設定 Press and hold **▼** for 3 seconds to exit setting.



D209	為 0 時 :原本設定 0: original setting.
	為 1 時 :開啟前後切 1 : Start front and back cutting.
D200	前切數值 Front cutting value.
D201	後切數值 Rear cutting value.

※D209 為 1 時，無教導式。

※When D209 is 1, there is no teaching.



D200(前) D200 (front)	布料開始進入偵測位置到剪刀距離的針數 The number of stitches where the cloth starts to enter the detection position to the distance between the scissors.
D201(後) D201 (back)	布料離開偵測位置到剪刀距離的針數 The number of stitches from the fabric leaving the detection position to the scissors.

# 光纖放大器調整說明

## Fiber Amplifier Adjustment Instructions



1. 布料放至偵測位置,SET 長按 3 秒,  
跳轉至 1Pnt · XXX

Cloth put to detect position, press the SET  
3seconds, go to 1Pnt. XXX

2. 移除布料,手指離開,跳轉至 2Pnt · XXX

Remove the fabric, leave your finger, and  
jump to 2Pnt. XXX

3. SET 長按 3 秒,則會取得數值(綠)

SET 3 seconds long,get the value (green)

取得數值(綠)

Get value (green)



偵測數值(紅)

Detection value (red)